



PROJECT HEART^{Inc.}

Holding Excellence Above Relapse Team

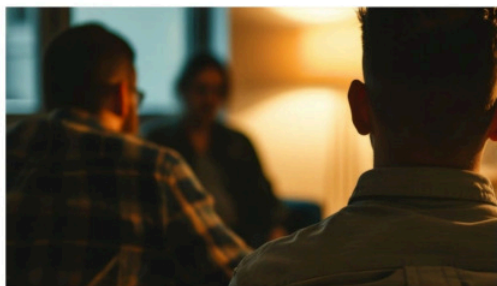
2025 Impact Report





PROJECT HEART  Inc.
Holding Excellence Above Relapse Team





From the Executive Director & Board of Directors

As we close out 2025, we find ourselves filled with gratitude—for every life touched by Project H.E.A.R.T., every volunteer who showed up with compassion, and every community partner and donor who made our mission possible. This year has reminded us, yet again, that healing isn't just an individual journey—it's a community commitment. And that commitment continues to grow stronger.

From the very beginning, Project H.E.A.R.T. was built on one simple truth: people heal best in the presence of **authentic friendship, structured support, and hope for something greater**. Over the past year, we've walked alongside hundreds of individuals at various stages of recovery—from those leaving incarceration and starting over through *Project New Start*, to those showing up consistently at peer-led meetings, building the daily habits of trust, responsibility, and self-worth.

Every number in this report tells a story. Behind every statistic is a person—a son or daughter, a parent, a friend—taking the brave steps to break free from addiction, rebuild damaged relationships, and re-enter society with dignity. And while recovery isn't easy, it's always worth it. What we witness daily at Project H.E.A.R.T. is nothing short of transformation. Not just avoiding relapse but choosing excellence—over and over again.

In 2025, we also laid important groundwork for our future: refining our mentorship model, strengthening partnerships with local service providers, and investing in the systems that will carry this work forward sustainably. We are especially proud of the growth within *Project New Start*, as it continues to reduce recidivism and bring real second chances to those reentering our communities.

We know our work is far from finished. As we look ahead to 2026, our vision is bold: to expand capacity, deepen impact, and ensure that every person in Nevada County and surrounding areas seeking recovery and reentry support has a place to turn. Whether that support looks like a listening ear, a peer mentor, a referral to housing or treatment, or simply a friend to believe in them—**Project H.E.A.R.T. is here**.

To our supporters: Thank you. Your belief in our mission fuels everything we do. Your time, generosity, and partnership are making lasting change possible. Together, we are holding excellence above relapse. Together, we are offering not just recovery—but redemption, renewal, and real community.

With gratitude and hope,

Jim Amaral, Executive Director
The Project H.E.A.R.T. Board of Directors

MEASURING OUR MISSION

Fiscal Year 2025

PROJECT HEART  Inc.
Holding Excellence Above Relapse Team

Every Life Counts

Total Lives Reached
Individuals supported through programs in 2025-
6,000

**Peer Mentorship
Hours Logged -**

750

**Group Meetings
Hosted -**

156

**Total Group
Meeting
Attendees -**

3,800

**Project NEW START
Monthly
Participants -**

18

**Certified Peer
Mentors
Trained -**

20

**Nevada County Jail
In-Reach Service
Hours logged -**

1,500

**Community
Service Hours
Logged-**

600

**Special Events
Held-**

17





Project HEART Programs–

A safe supportive environment for those navigating life's most destabilizing challenges.

Weekly Group Meetings

We meet weekly in separate men's and women's groups to cultivate relationships built on trust, support, and inspiration. Our approach uses conversation, peer mentoring, and journaling to identify unhelpful thinking patterns and to help each person process difficult situations in a constructive, caring way.

Peer Mentoring

Group Members have the chance to meet one on one with a peer mentor. These relaxed moments outside the meeting room help deepen friendships, build trust, and strengthen the sense of community that supports long-term growth.

Community Service Projects

Our men's and women's teams serve the community monthly. The Project Heart community helps residents, non-profits, and local agencies. These projects build practical skills, confidence, and a spirit of giving back.

Special Events

The Project Heart community enjoys clean and sober outings that bring joy, connection and fun. Whether it's a special event or a service project, these gatherings create opportunities for genuine relationships to grow and for everyone to feel a part of something meaningful.



Project NEW START –

A Fresh Path Forward for Returning Citizens

Project New Start is a reentry and stabilization program designed to support individuals transitioning from incarceration back into society. Built in response to the complex needs of people exiting the justice system, this program provides a structured pathway for reintegration, accountability, and long-term personal growth.

Funded through a state reentry grant, Project New Start offers **non-residential support services** to those who have served state prison commitments. Project H.E.A.R.T. is honored to serve as one of the approved programs meeting that need—offering mentorship, structure, and a supportive community rooted in lived experience.

Many participants in Project New Start have been identified as **high-risk for recidivism**, often due to histories of addiction, homelessness, trauma, and lack of stable social support. Project New Start helps interrupt that cycle by providing what traditional systems often cannot: *relationship-driven guidance and consistent peer accountability*.

Through regular check-ins, peer mentorship, group connection, and wraparound referral access—participants are equipped to do more than just comply with parole requirements. They're supported as they **rebuild their lives**—reconnecting with family, pursuing employment, staying sober, and regaining a sense of purpose and dignity.

While Project H.E.A.R.T. does not receive direct profit from this program, we see its value every day in changed lives, reduced rates of recidivism, and stronger community reintegration. This program is one of the clearest expressions of our mission: to **holding excellence above relapse—and walk with people as they learn how to live again**.



Project CalAIM–

A California State medi-cal program

CalAIM offers a person-centered approach to support medi-cal clients with care that meets them wherever they are. Through this program, clients will receive case management and support services including housing navigation, housing deposits, utility deposits, and tenancy sustaining services.

Project HEART proudly provides medi-cal based **Enhanced Care Management (ECM)** and **Community Support (CS)** services.

Nevada County Probation Program Contract–

Promoting recovery-oriented decision making

Project Heart provides peer mentoring services under contract with Adult Drug Court to support individuals on active formal probation. The program pairs participants with trained peer mentors who offer consistent support, goal-setting assistance, and real-world guidance rooted in lived experience. This approach reinforces accountability, promotes recovery-oriented decision-making, and contributes to improved probation outcomes.



Nevada County Sheriff Contract—

Helping build personal insight

By partnering with the Sheriff's Office, Project Heart reaches individuals at a pivotal moment—before release—through in-reach services and Cognitive Behavioral Treatment. This work helps participants recognize harmful thought patterns, build personal insight, and prepare for life beyond incarceration with greater confidence and support.

Community Services Block Grant—

Supporting low-income individuals and families

Through the Community Services Block Grant (January 2026–December 2027), Project Heart supports low-income individuals and families by addressing immediate needs while strengthening long-term stability. CSBG-funded services help remove barriers to self-sufficiency by providing supportive resources, connection to services, and individualized guidance. This program reinforces economic resilience and promotes healthier, more stable households across the community.

A Big-Picture Vision For Project Heart



With so much at stake for the individuals and families in the communities we serve, Project Heart remains focused on what matters most: **people, stability, and connection**. Every day, we work alongside individuals navigating life's most destabilizing challenges—addiction, justice involvement, housing insecurity, and isolation—offering a safe place to land and a path forward rooted in dignity, accountability, and hope.

Vision

We envision communities where individuals facing profound life disruptions are not defined by their circumstances, but are supported, valued, and empowered to rebuild stable, meaningful lives.

Mission

To provide a safe, supportive environment for individuals navigating life's most destabilizing challenges.

Our Strategic Focus

Project Heart's work is guided by three interconnected areas of focus that reflect both individual transformation and community wellbeing.

People

We prioritize the whole person—meeting individuals where they are and honoring their lived experience. Through peer mentoring, in-reach services, and recovery-oriented support, we help people develop accountability, resilience, and a renewed sense of purpose.

Stability

We focus on helping individuals and families move from crisis to stability. Whether through justice-involved programming, behavioral health support, or services for low-income households, our programs address the foundational needs—safety, structure, and support—that make long-term change possible.

Community Connection

Lasting change does not happen in isolation. Project Heart strengthens community by fostering healthy relationships, encouraging service and responsibility, and building bridges between individuals, families, and local systems. When people are supported, communities grow safer, stronger, and more connected.

Strategic Priorities: 2026–2030: Over the next four years, Project Heart will focus on the following priorities to deepen impact and ensure sustainability. Grow annual donors and sponsorship revenue to diversify Project Heart's funding and reduce reliance on government support.

Strengthen Program Quality and Outcomes: Expand evidence-based, peer-led programming with clear outcomes related to recovery, stability, and successful reentry.

Build Organizational Capacity: Invest in staff development, peer mentor training, marketing, and systems that support consistency, accountability, and long-term growth. Open additional office in Placer County.

Expand Strategic Partnerships: Deepen collaboration with justice systems, service providers, funders, and community stakeholders to strengthen continuity of care and shared impact.

Ensure Financial Sustainability: Diversify funding through grants, contracts, individual giving, and community support to sustain and grow services responsibly.

Thank you for supporting our mission and walking alongside Project Heart on this journey. Together, we are building safer pathways, stronger lives, and more compassionate communities.

Project Heart Leadership



Board of Directors

- **Board President**
 - Jim Phillips
- **Board Vice-President**
 - Chris Duckett
- **Board Secretary**
 - Jo Ann Rebane
- **Board Treasurer**
 - Janis Duckett
- **At-large Directors**
 - George Rebane
 - Shawn Estey
 - Dave Estey
- **Advisory Board Members**
 - Paul Jacobson
 - Mindy Jacobson
 - Jennifer Hodges

Executive Team / Staff

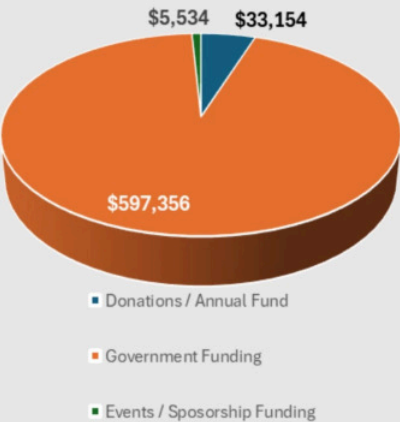
- **Executive Director**
 - Jim Amaral
- **Men's Team Coordinator/
Case Manager**
 - Dave Mullan
- **Women's Team Coordinator/
Case Manager**
 - Christy Thompson
- **CALAIM Case Manager**
 - Olivia Donley
- **Peer Mentor Director/
Case Manager**
 - Ryan Nestell
- **Director of Partnerships
and Outreach**
 - Fred Viola
- **New Start Case Managers**
 - Steve Smithson
 - Chris Findley
- **Finance Division**
 - Carol Viola
 - Lisa Alcantara

Calendar Year 2025

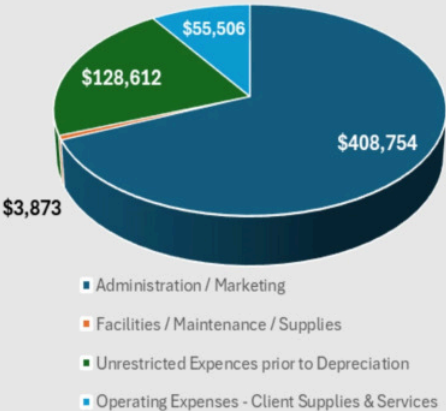
Financial Overview



OPERATING SUPPORT AND REVENUE



OPERATING EXPENSES - CLIENT SUPPLIES & SERVICES



Donations / Annual Fund	\$33,154
Government Funding	\$597,356
Events / Sponsorship Funding	\$5,534
TOTAL REVENUE	\$636,044

Administration / Marketing	\$408,754
Facilities / Maintenance / Supplies	\$3,873
Unrestricted Expenses prior to Depreciation	\$128,612
Operating Expenses - Client Supplies & Services	\$55,506
TOTAL EXPENSES	\$596,745

2025

THE YEAR IN NUMBERS

6,000.....	PROGRAM PARTICIPANTS
600	COMMUNITY SERVICE HOURS
245.....	HOLIDAY SEASON DINNER EVENT
3,800.....	GROUP MEETING ATTENDEES
6.....	EMPLOYEES

Grants – Donors – Partnerships 2025



GRANTS

Board of State and Community Corrections Cohort 3: \$366,085.

Board of State and Community Corrections Cohort 4: \$146,720.

DONORS

- **Legacy Donor (\$25,000+)**
 - George and Jo Ann Rebane
- **Champion Donor (\$5,000-\$9,999)**
 - Mackenzie Family
- **Partner Donor (\$1,000-\$4,999)**
 - Ryan Carroll
- **Advocate Donor (\$250-\$999)**
 - Amy Daniels
 - Gall Headstrom
 - Volz Bros.
 - Nancy Sargent
 - Nancy and Chris Filippi
 - Deborah and Russel Wilder

PARTNERSHIPS

- **Partnering Companies**
 - Estey Electric
 - MAVEN Risk Management
 - JMS Builders
 - Craig Johnson Plumbing
 - Empire Home Loans
 - Volz Bros. Auto
 - Cordelia RV Center
 - Mark Optics, Inc.
 - Principled Plumbing
 - Missions Coffee
 - Crow Media
 - Sierra Auto Body

Donate Today!





**Thank you for
supporting - Project H.E.A.R.T.**

Our local county and surrounding areas impact could not be achieved without the ongoing generosity of our donors, grant participants, members, and sponsors.

P.O. Box 2377, Grass Valley, CA. 95949
www.projectheart.net

PROJECT HEART Inc.

Holding Excellence Above Relapse Team



TAX ID: 47-1597621